

# Product Sheet

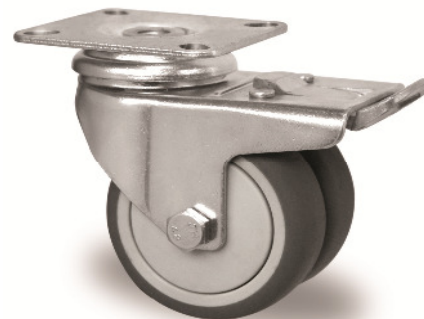


Item No. T D P E 1 C C 075 P 2 T 2 B 4 2

## housing / data

housing type  
series  
fixing type  
hole dimensions / hub width  
thickness of fixing / fork  
surface treatment

swivel castor with total brake  
apparatus twin wheels  
fixing plate  
77 x 67 mm  
3.00 mm / 2.50 mm  
zinc-chromatised



## wheel / data

diameter  
wheel center  
wheel tread  
bearing  
threadguard  
hub width  
axle diameter  
temperature range  
dyn. load capacity

75 mm  
Polypropylene grey  
thermopl. rubber 95° Shore A grey  
single ball bearing  
full covering plastic threadguard  
56 mm  
M8  
-20°C - +60°C  
100 kg

