



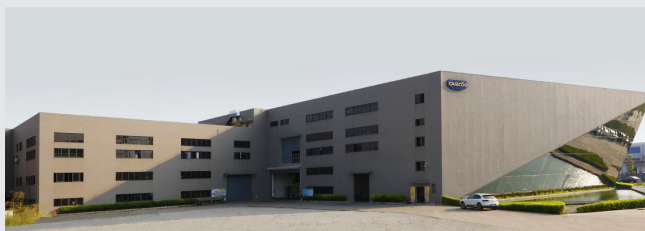
## HEAVY DUTY CASTORS



**CASCOO Europe GmbH**  
Lütke Haar 15  
59602 Rülten  
Germany

web: [www.cascoo.eu](http://www.cascoo.eu)  
email: [info@cascoo.eu](mailto:info@cascoo.eu)

phone: 0049 (0)2952 970 629 0



**Zhongshan CASCOO Metal Machinery Co., Ltd**  
No.108 Zhaoyi Road, Dongsheng Town, Zhongshan,  
Guangdong, China  
Post Code: 528414

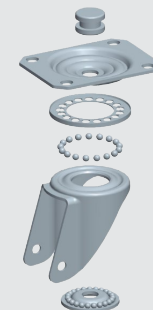
web: [www.cascoo.com](http://www.cascoo.com)  
email: [sales@cascoo.com](mailto:sales@cascoo.com)

phone: 0086 (0)760 898 215 59

## HEAVY DUTY HOUSINGS

Benefit from our different heavy duty housings and select the housing which fits your personal needs.

You can choose between the following housings:



article no.	plate / fork	max. load capacity <sup>1</sup>
-------------	--------------	---------------------------------

swivel

SHP57WC	4.0 / 3.0 mm	300 - 400 kg
SHP5EWC	5.0 / 4.0 mm	500 - 700 kg
SHP5KWC	6.0 / 5.0 mm	900 - 1000 kg
SHP5MWC	8.0 / 6.0 mm	1500 kg

swivel with total brake

THP57WC	4.0 / 3.0 mm	300 - 400 kg
THP5EWC	5.0 / 4.0 mm	500 - 700 kg
THP5KWC	6.0 / 5.0 mm	1000 kg

swivel with back brake

CHP5MWC	8.0 / 6.0 mm	1500 kg
---------	--------------	---------

fixed

FHP53WC	3.0 / 3.0 mm	300 - 400 kg
FHP54WC	4.0 / 4.0 mm	500 - 700 kg
FHP5LWC	5.0 / 5.0 mm	1000 kg
FHP5MWC	8.0 / 6.0 mm	1500 kg

<sup>1</sup>depending on the size of the housing and the assembled wheel  
(max. load capacity of castor = max. load capacity of wheel)

## Break through all obstacles - CASCOO's HEAVY GUYS

From now on, we provide a welded heavy duty housing with a load capacity up to 1500 kg. Discover also the cast iron rim and the redesigned aluminium rim as well as the changed colours of the standard elastic wheel and the PUlastic wheel.

We move your goods to their destination safely.

All wheels are available as swivel, swivel with brake, swivel with back brack and fixed castors.



### series BAU5

rim:	Aluminium		
tread:	Polyurethan 93-95° shore A		
bearing:	double ball bearing without threadguard		
temperature range:	-20°C up to +60°C		
size of plate:	135 x 110 mm		
plate hole centres:	105 x 84/76 mm		
wheel diameter:	125 mm	160 mm	200 mm
tread width:	50mm	50 mm	50 mm
axle screw:	M12	M12	M12
load capacity:	500 kg	600 kg	800 kg



### series I2U5

rim:	Cast Iron		
tread:	Polyurethane 93-95° shore A		
bearing:	double ball bearing without threadguard		
temperature range:	-20°C up to +80°C		
size of plate:	135 x 110 mm		
plate hole centres:	105 x 84/76 mm		
wheel diameter:	125 mm	160 mm	200 mm
tread width:	50 mm	50 mm	50 mm
axle screw:	M12	M12	M12
capacity:	700 kg	800 kg	1000 kg



### series BAF2

rim:	Aluminium		
tread:	Elastic 70° shore A		
bearing:	double ball bearing without threadguard		
temperature range:	-20°C up to +80°C		
size of plate:	135 x 110 mm		
plate hole centres:	105 x 84/76 mm		
wheel diameter:	125 mm	160 mm	200 mm
tread width:	50 mm	50 mm	50 mm
axle screw:	M12	M12	M12
load capacity:	300 kg	400 kg	500 kg



### series BAX7

rim:	Aluminium		
tread:	PUlastic 75° shore A		
bearing:	double ball bearing without threadguard		
temperature range:	-20°C up to +60°C		
size of plate:	135 x 110 mm		
plate hole centres:	105 x 84/76 mm		
wheel diameter:	125 mm	160 mm	200 mm
tread width:	50 mm	50 mm	50 mm
axle screw:	M12	M12	M12
load capacity:	500 kg	600 kg	800 kg



### series Z0Z0

rim:	Polyamid PA6		
tread:	Polyamid PA6		
bearing:	double ball bearing without threadguard		
temperature range:	-40°C up to +80°C		
size of plate:	135 x 110 mm		
plate hole centres:	105 x 84/76 mm		
wheel diameter:	150 mm	160 mm	200 mm
tread width:	50 mm	50 mm	50 mm
axle screw:	M12	M12	M12
capacity:	800 kg	800 kg	1000 kg