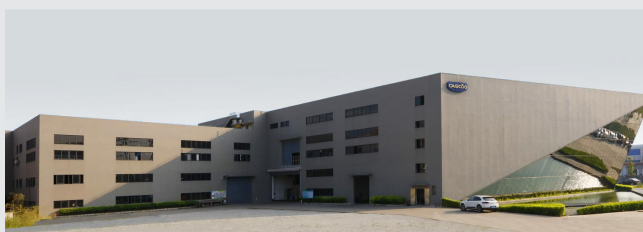




CASCOO Europe GmbH
Lütke Haar 15
59602 Rülten
Germany

web: www.cascoo.eu
email: info@cascoo.eu

phone: 0049 (0)2952 970 629 0



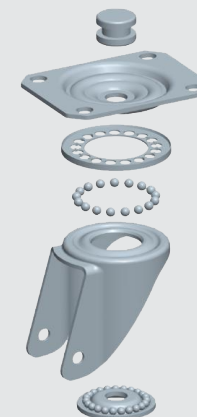
Zhongshan CASCOO Metal Machinery Co., Ltd
No.108 Zhaoyi Road, Dongsheng Town, Zhongshan,
Guangdong, China
Post Code: 528414

web: www.cascoo.com
email: sales@cascoo.com

phone: 0086 (0)760 898 215 59

CASTORS FOR FLIGHTCASES

For your flightcase business and all further use of “blue-wheels”, CASCOO now provides a wide range of housings and wheels. Our latest development is a massive housing with 4.0 mm plate and 3.5 mm fork, developed especially for the flightcase industry with a strong brake and the guarantee of usage in extreme conditions. Please contact our sales team for further information.



CASTORS FOR FLIGHTCASES



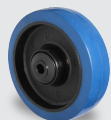


series Basics

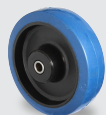
rim: Polyamide
tread: Elastic blue 75° Shore A
bearing: roller bearing / ball bearing
temperature range: -20°C up to +80°C

wheel diameter:	80 mm	100 mm	125 mm
tread width:	35 mm	35 mm	38 mm
axle screw:	M8	M8	M10
load capacity:	130 kg	160 kg	200 kg
size of plate:	105 x 80 mm		
plate hole centres:	80/77 x 60 mm		
strength of plate / fork:	2.5 mm / 2.5 mm		

wheel diameter:	160 mm	200 mm
tread width:	46 mm	46 mm
axle screw:	M12	M12
load capacity:	300 kg	350 kg
size of plate:	135 x 110 mm	
plate hole centres:	105 x 84/76 mm	
strength of plate / fork:	3.5 mm / 3.0 mm	



wheel with ball bearing with small plastic threadguard (R4F1B34)



wheel with roller bearing without threadguard (R4F1R0N)

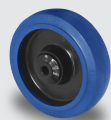


series Premium

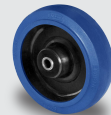
rim: Polyamide
tread: Elastic blue 65° Shore A
bearing: roller bearing / ball bearing
temperature range: -20°C up to +80°C

wheel diameter:	80 mm	100 mm	125 mm
tread width:	35 mm	35 mm	38 mm
axle screw:	M8	M8	M10
load capacity:	130 kg	160 kg	200 kg
size of plate:	105 x 80 mm		
plate hole centres:	80/77 x 60 mm		
strength of plate / fork:	3.0 mm / 2.5 mm		

Also available in 160mm and 200mm. Please ask our sales team for more information and delivery time.



wheel with ball bearing with small plastic threadguard (R4E1B34)



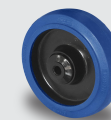
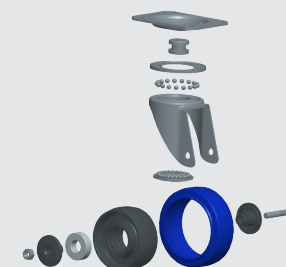
wheel with roller bearing without threadguard (R4E1R0N)



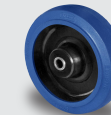
series Superb

rim: Polyamide
tread: Elastic blue 65° Shore A
bearing: roller bearing / ball bearing
temperature range: -20°C up to +80°C

wheel diameter:	100 mm	125 mm
tread width:	35 mm	38 mm
axle screw:	M8	M10
load capacity:	160 kg	200 kg
size of plate:	105 x 80 mm	
plate hole centres:	80/70 x 60 mm	
strength of plate / fork:	4.0 mm / 3.5 mm	



wheel with ball bearing with small plastic threadguard (R4E1B34)



wheel with roller bearing without threadguard (R4E1R0N)