



STAINLESS STEEL CASTORS



CASCOO Europe GmbH
Lütke Haar 15
59602 Rüthen
Germany

web: www.cascoo.eu
email: info@cascoo.eu

phone: 0049 (0)2952 970 629 0



Zhongshan CASCOO Metal Machinery Co., Ltd
No.108 Zhaoyi Road, Dongsheng Town, Zhongshan,
Guangdong, China
Post Code: 528414

web: www.cascoo.com
email: sales@cascoo.com

phone: 0086 (0)760 898 215 59



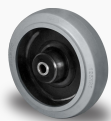
HIGHLIGHTS

- all housings made by V2A (AISI 304)
- perfect pivot bearing clearance
- also available as single housings



The new CASCOO Innovation inox series is the perfect solution for your stainless demand. Only the best materials – all parts of our housings are made by V2A (AISI 304) – and the combination of a minimum pivot clearance and high load capacities can guarantee the well-known CASCOO quality promise.

For further information please contact our sales team.



series R4E2

rim:	Polyamide	
tread:	Elastic grey 65° Shore A	
bearing:	roller bearing / single ball bearing in stainless steel	
temperature range:	-20°C up to +80°C	
wheel diameter:	100 mm	125 mm
tread width:	35 mm	38 mm
axle screw:	M8	M8
load capacity:	160 kg	200 kg



swivel, fixed and swivel castor with total brake

wheel diameter:	100 mm	125 mm
overall height:	128 mm	155 mm
size of plate:	96 x 80 mm	
plate hole centres:	80/77 x 60 mm	
plate hole:	9 mm	



swivel castor with bolt hole, swivel castor with bolt hole total brake

wheel diameter:	100 mm	125 mm
overall height:	126 mm	153 mm
bolt hole size:	13 mm	



series N0N0

rim:	Polyamide		
tread:	Polyamide		
bearing:	plain bearing in stainless steel		
temperature range:	-40°C up to +80°C		
wheel diameter:	80 mm	100 mm	125 mm
tread width:	32 mm	32 mm	32 mm
axle screw:	M8	M8	M8
load capacity:	130 kg	150 kg	200 kg



swivel, fixed and swivel castor with total brake

wheel diameter:	80 mm	100 mm	125 mm
overall height:	108 mm	128 mm	155 mm
size of plate:	96 x 80 mm		
plate hole centres:	80/77 x 60 mm		
plate hole:	9 mm		



swivel castor with bolt hole, swivel castor with bolt hole total brake

wheel diameter:	80 mm	100 mm	125 mm
overall height:	106 mm	126 mm	153 mm
bolt hole size:	13 mm		



series N2U6

rim:	Polyamide		
tread:	Polyurethane 95° shore A		
bearing:	roller bearing in stainless steel		
temperature range:	-40°C up to +80°C		
wheel diameter:	80 mm	100 mm	125 mm
tread width:	32 mm	32 mm	32 mm
axle screw:	M8	M8	M8
load capacity:	130 kg	150 kg	200 kg



swivel, fixed and swivel castor with total brake

wheel diameter:	80 mm	100 mm	125 mm
overall height:	108 mm	128 mm	155 mm
size of plate:	96 x 80 mm		
plate hole centres:	80/77 x 60 mm		
plate hole:	9 mm		



swivel castor with bolt hole, swivel castor with bolt hole total brake

wheel diameter:	80 mm	100 mm	125 mm
overall height:	106 mm	126 mm	153 mm
bolt hole size:	13 mm		